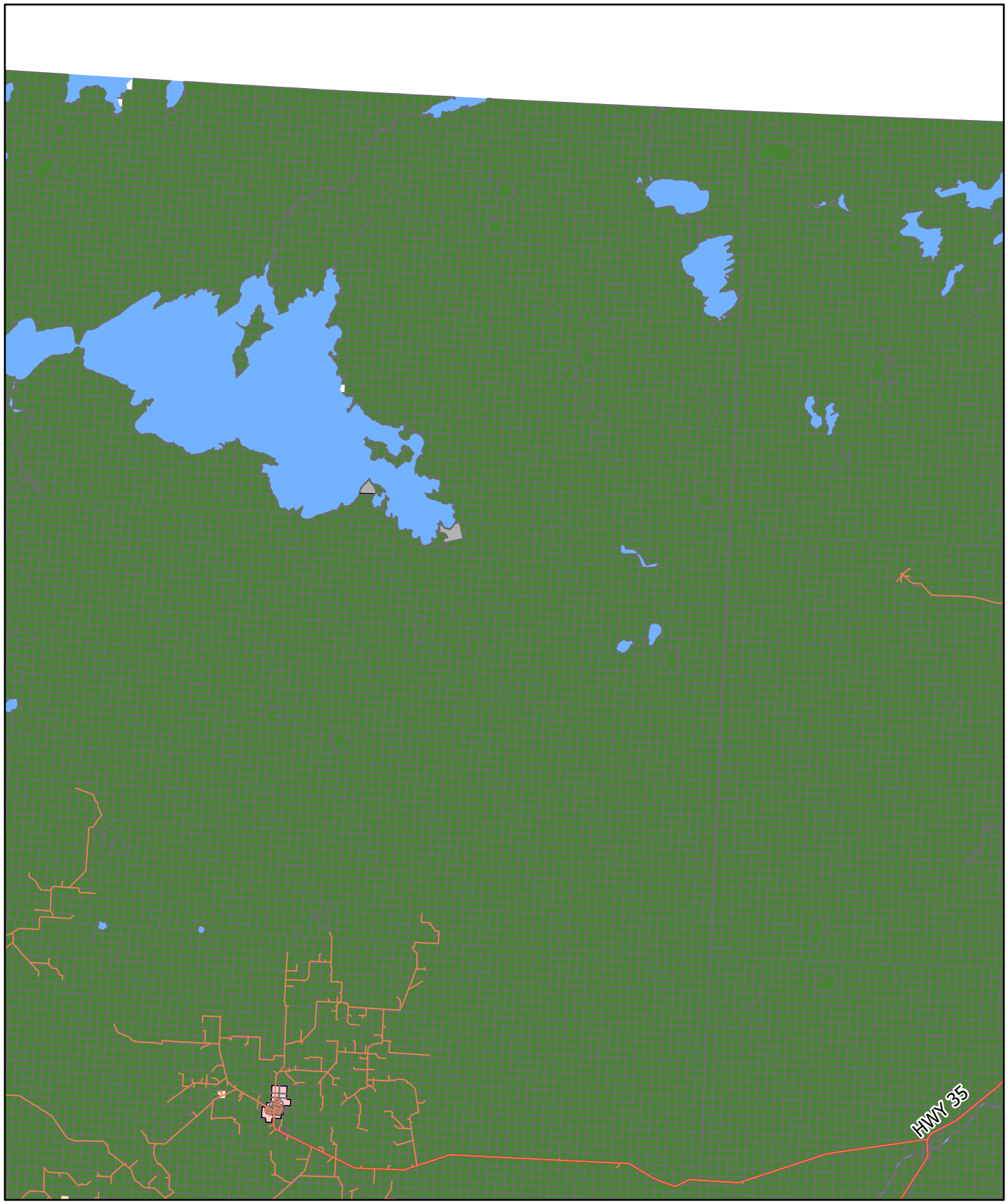


Rural Land Use Districts

- |                        |                             |                          |                        |
|------------------------|-----------------------------|--------------------------|------------------------|
| Agricultural 1         | Country Residential         | Recreation 1             | Parcel Boundary        |
| Airport                | Direct Control 1            | Recreation 2             | Roads                  |
| Country Recreational   | Direct Control 2            | Remote Recreation        | Waterbodies            |
| Country Recreational 2 | Forestry                    | Rural Industrial General | First Nations Reserves |
|                        | Hamlet - Highway Commercial | Rural Industrial Light   |                        |
|                        | Institutional               | Urban Fringe             |                        |

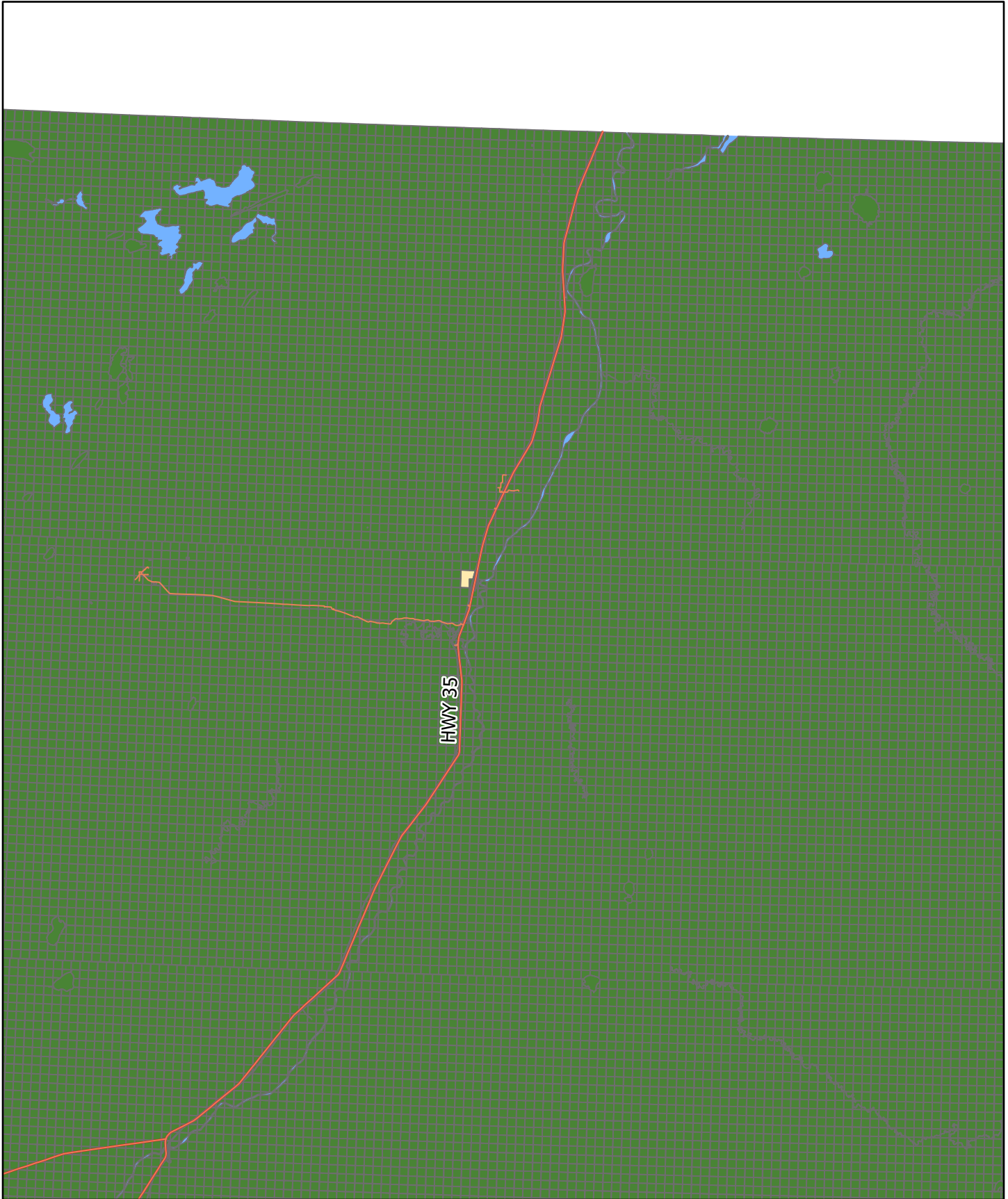




Rural Land Use Districts

- |                        |                             |                          |                        |
|------------------------|-----------------------------|--------------------------|------------------------|
| Agricultural 1         | Country Residential         | Recreation 1             | Parcel Boundary        |
| Airport                | Direct Control 1            | Recreation 2             | Provincial Highways    |
| Country Recreational   | Direct Control 2            | Remote Recreation        | Roads                  |
| Country Recreational 2 | Forestry                    | Rural Industrial General | Waterbodies            |
|                        | Hamlet - Highway Commercial | Rural Industrial Light   | Hamlet Boundaries      |
|                        | Institutional               | Urban Fringe             | First Nations Reserves |





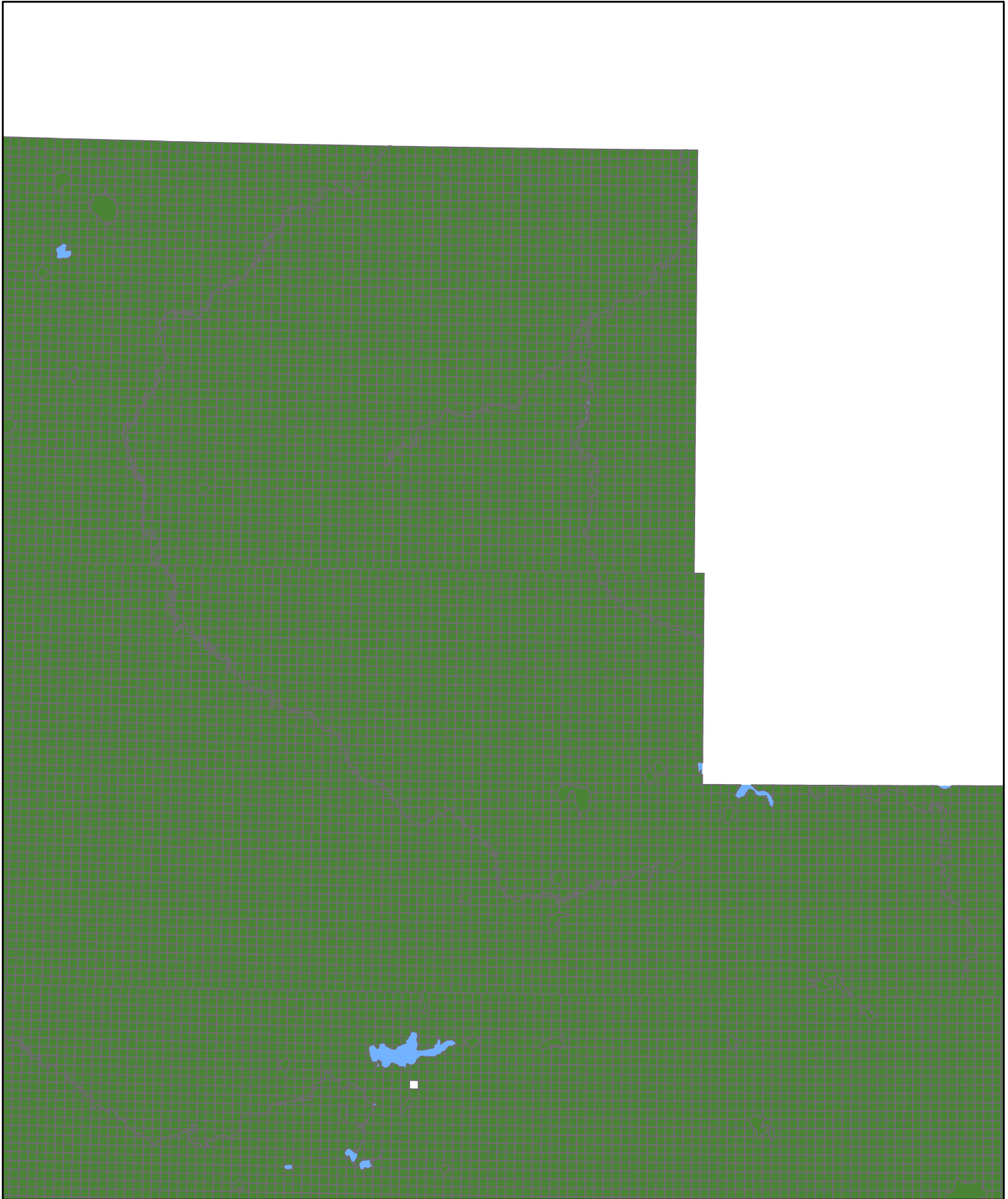
Rural Land Use Districts

- Agricultural 1
- Airport
- Country Recreational
- Country Recreational 2
- Country Residential
- Direct Control 1
- Direct Control 2
- Forestry
- Hamlet - Highway Commercial
- Institutional
- Recreation 1
- Recreation 2
- Remote Recreation
- Rural Industrial General
- Rural Industrial Light
- Urban Fringe

- Parcel Boundary
- Provincial Highways
- Roads
- Waterbodies
- First Nations Reserves



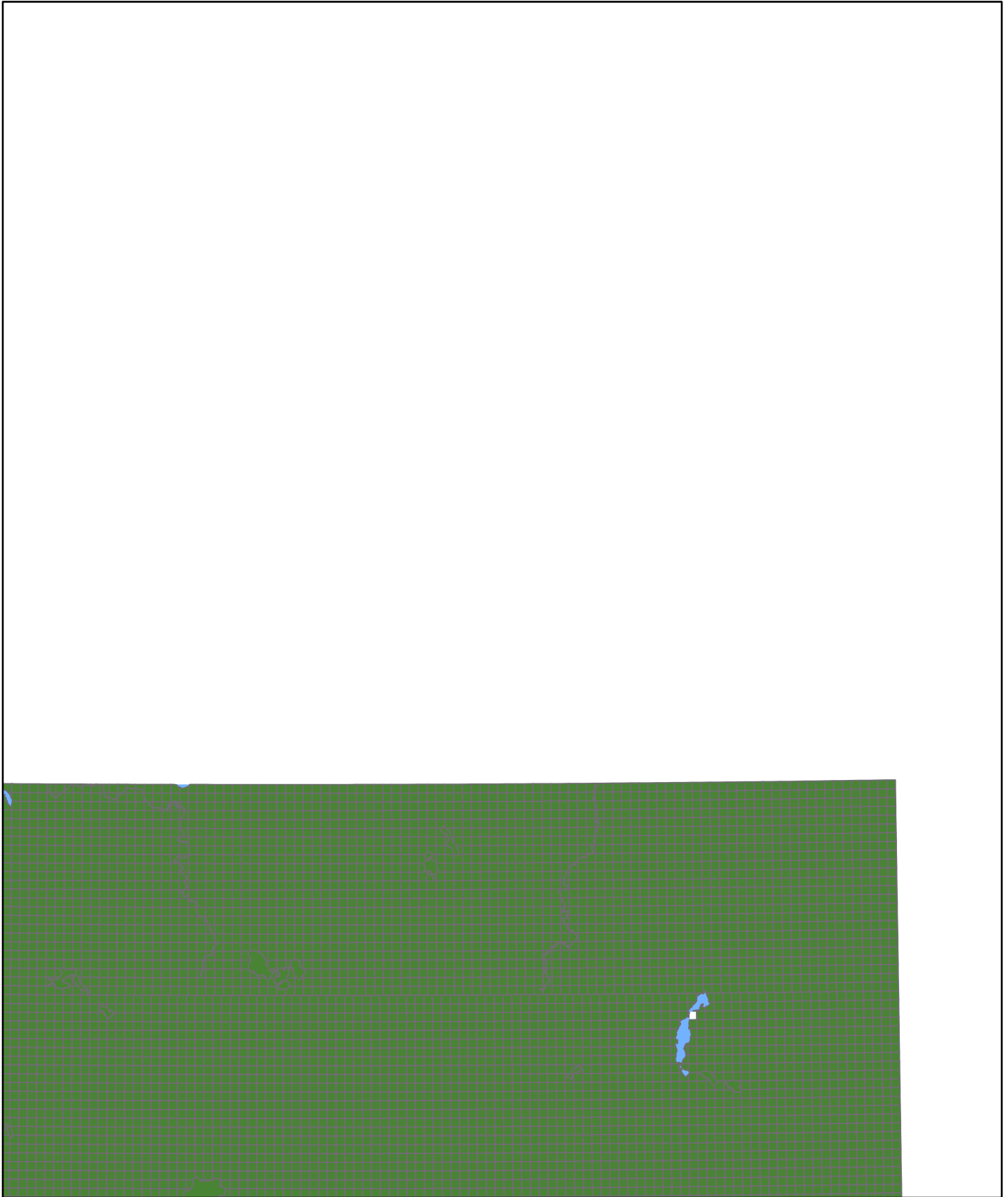




Rural Land Use Districts

- |                        |                             |                          |
|------------------------|-----------------------------|--------------------------|
| Agricultural 1         | Direct Control 1            | Remote Recreation        |
| Airport                | Direct Control 2            | Rural Industrial General |
| Country Recreational   | Forestry                    | Rural Industrial Light   |
| Country Recreational 2 | Hamlet - Highway Commercial | Urban Fringe             |
| Country Residential    | Institutional               | Parcel Boundary          |
|                        | Recreation 1                | Waterbodies              |
|                        | Recreation 2                | First Nations Reserves   |





Rural Land Use Districts

- |                        |                             |                          |
|------------------------|-----------------------------|--------------------------|
| Agricultural 1         | Direct Control 1            | Remote Recreation        |
| Airport                | Direct Control 2            | Rural Industrial General |
| Country Recreational   | Forestry                    | Rural Industrial Light   |
| Country Recreational 2 | Hamlet - Highway Commercial | Urban Fringe             |
| Country Residential    | Institutional               | Parcel Boundary          |
|                        | Recreation 1                | Waterbodies              |
|                        | Recreation 2                | First Nations Reserves   |

